



# 2008-2009 GMT Quarterly Report for District (or Undistricted) **District 324D1**



**GMT: Adv K G RAMA KRISHNA MUR**

**Location: INDIA**

**GMT CA: 6**

## CLUBS

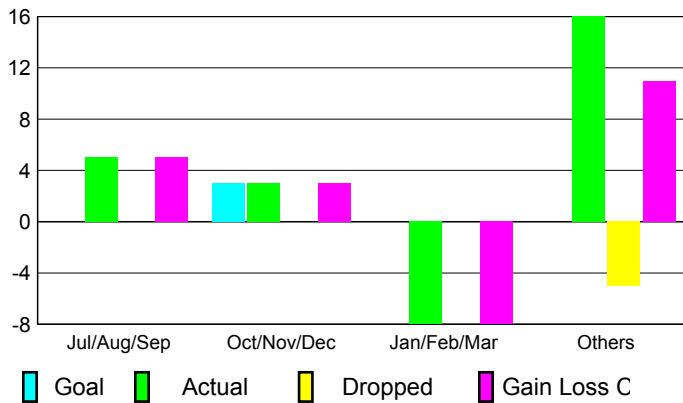
### Club Results 2008-2009

### Clubs 2007-2008

| Month         | New Club Goal | Actual New Clubs | Actual Dropped Clubs | Gain/Loss of Clubs | Gain/Loss of Clubs |
|---------------|---------------|------------------|----------------------|--------------------|--------------------|
| Jul/Aug/Sep   | 0             | 5                | 0                    | 5                  | 0                  |
| Oct/Nov/Dec   | 3             | 3                | 0                    | 3                  | 1                  |
| Jan/Feb/Mar   | 0             | -8               | 0                    | -8                 | 2                  |
| Apr/May/June  | 0             | 16               | -5                   | 11                 | 17                 |
| <b>Totals</b> | <b>3</b>      | <b>16</b>        | <b>-5</b>            | <b>11</b>          | <b>20</b>          |

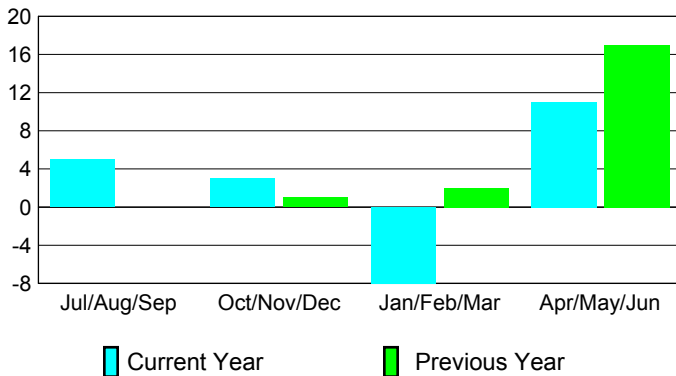
### Club Results 2008-2009

Goal, New, Dropped, Gain/Loss



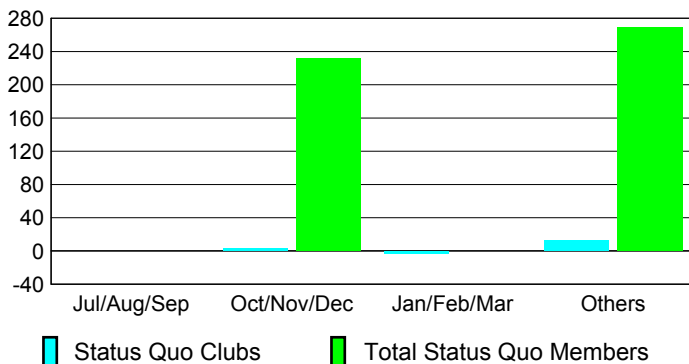
### Comparison of Club Gain/Loss

Current Year Compared to the Previous Year



### YTD Status Quo Clubs 2008-2009

Status Quo Clubs Compared to Status Quo Members



## MEMBERSHIP

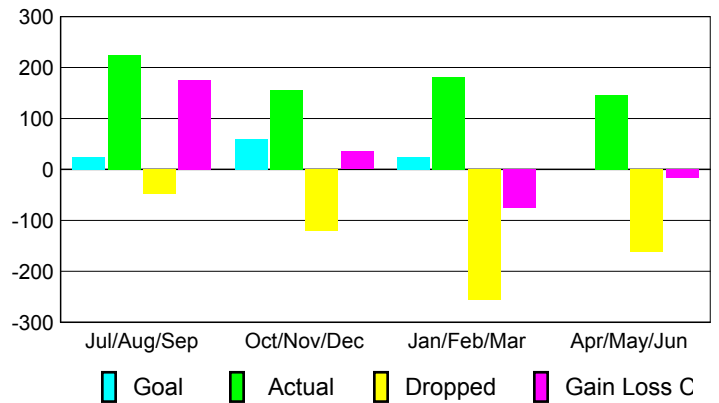
### Membership Results 2008-2009

### Membership 2007-2008

| Month         | Net Memb Goal | Actual New Memb | Actual Dropped Memb | Gain/Loss of Memb | Gain/Loss of Memb |
|---------------|---------------|-----------------|---------------------|-------------------|-------------------|
| Jul/Aug/Sep   | 25            | 224             | -48                 | 176               | 73                |
| Oct/Nov/Dec   | 60            | 156             | -121                | 35                | 86                |
| Jan/Feb/Mar   | 25            | 182             | -257                | -75               | 219               |
| Apr/May/June  | 0             | 146             | -162                | -16               | 491               |
| <b>Totals</b> | <b>110</b>    | <b>708</b>      | <b>-588</b>         | <b>120</b>        | <b>869</b>        |

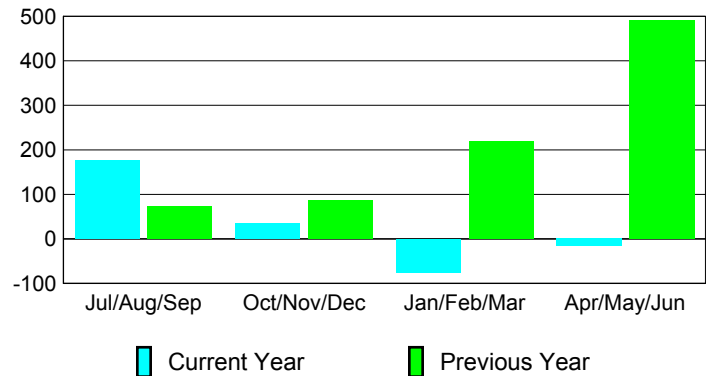
### Membership Results 2008-2009

Goal, New, Dropped, Gain/Loss

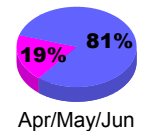
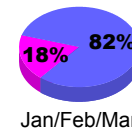
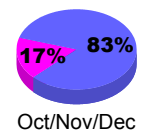
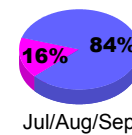


### Comparison of Membership Gain/Loss

Current Year Compared to the Previous Year



### Gender Comparison 2008-2009



Male

Female